

Scientific Creationism...

Is it a Myth?

Is it Possible?

Is it SCIENTIFIC?

An Introduction

Happy 35th Birthday!




So Why This Class?

- *Equip the Saints*
- *Strengthen our Faith*
- *Present a logical, scientific defense of Biblical creation*
- *Because the world is skeptical*
- *Demonstrate areas where Science and the Bible Agree*

An Introduction

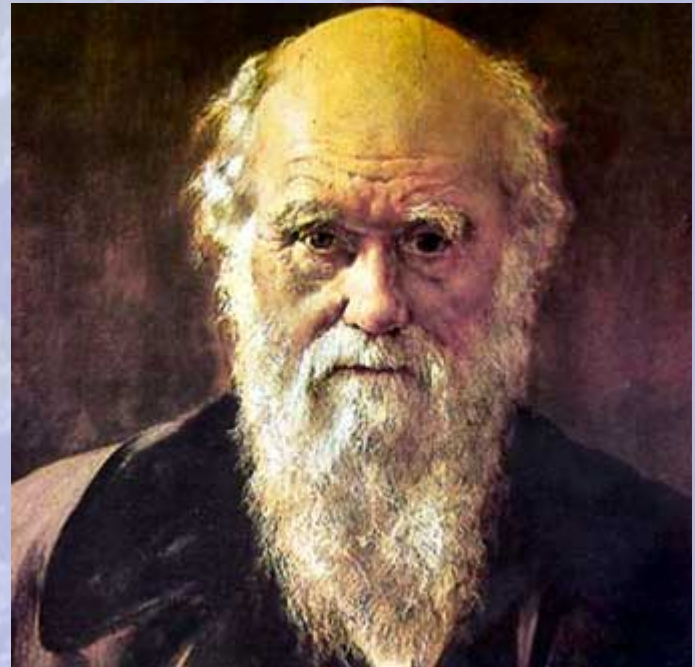
- ***Cosmology***
 - *The study of the origin and general structure of the universe.*
- ***The Origins of Life***
 - *It wasn't an accident!*
- ***Dinosaurs and Man***
 - *Yep! They co-existed!*
- ***The Fossil Record***
 - *It does NOT help bolster the evolutionary argument.*
- ***The Hydroplate Theory***
 - *So where did all the water come from?*

The Scientific Method

- 1) ***Observation and description of a phenomenon or group of phenomena.***
 - 2) ***Formulation of an hypothesis to explain the phenomena.***
 - 3) ***Experimentation to demonstrate the truth or falseness of the hypothesis.***
 - 4) ***Formulation of a conclusion that validates or modifies the hypothesis.***
- 

Observer-Expectancy Effect

- *As Charles Darwin put it...*
 - *“The observer is always biased.”*



Cosmology

An Examination of the Genesis of the Universe

- *The Law of Causality*
 - *Cause and Effect*
- *The Cause of the Universe*
 - *Three Propositions*
- *Teleonomy*
 - *Purposeful Design*

The Law of Cause and Effect

- *The most universal and most certain law in all of science*
- *Every Effect needs a Cause and every Cause Needs an Effect*
 - *Cause First, Effect Second – never vice versa*
- *Every Material Effect must have an Adequate Antecedent Cause*
- *Contingent Entities*

The Universe

The Universe is a Contingent Entity.

*It cannot account for its own creation.
It is dependent upon something
outside of itself to explain its
existence...*

So What CAUSED the Universe?

- *Three Propositions*
 - **Prop. 1** ~ *It is eternal and has always existed*
 - **Prop. 2** ~ *It is not eternal; it created itself out of nothing*
 - **Prop. 3** ~ *It is not eternal; rather, it was created by something (Someone) anterior and superior to itself.*

G. K. Chesterton

*“It is absurd for the evolutionist to complain that it is unthinkable for an admittedly unthinkable God to make everything out of nothing, and then pretend that it is **more** thinkable that nothing should turn itself into everything.”*

So What CAUSED the Universe?

- *Three Propositions*
 - **Prop. 1** ~ *It is eternal and has always existed*
 - **Prop. 2** ~ *It is not eternal; it created itself out of nothing*
 - **Prop. 3** ~ *It is not eternal; rather, it was created by something (Someone) anterior and superior to itself.*

Teleonomy

The Universe Shows Purposeful Design

- *Most Basic Elements of the Teleological Argument:*
 1. *If the Universe shows purposeful design, there must have been a designer.*
 2. *The Universe does show purposeful design.*
 3. *Thus, the Universe must have had a designer.*

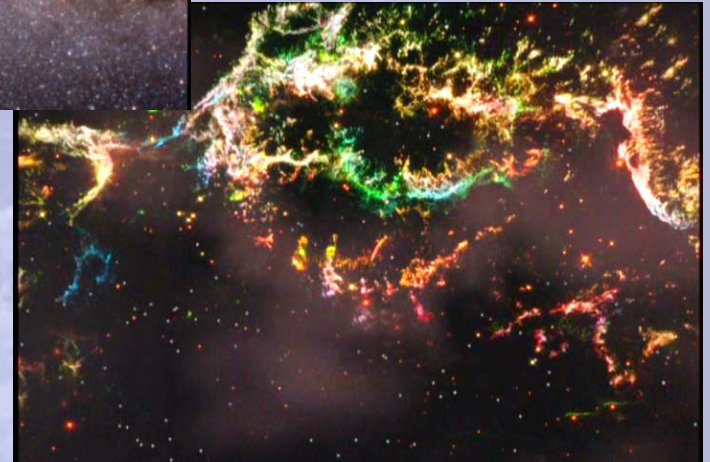
The Universe is IMMENSE!

- *Estimated to be 20 Billion Light Years in Diameter*
 - *Light Year is the Distance Light Travels in a Vacuum in a Year (given a constant speed)*
 - *186,000 miles per second*
 - *31,536,000 seconds in a year (60s*60m*24h*365d)*
 - *Light Year is Approx 5,865,696,000,000 Miles*
 - *The estimated diameter of the Universe:
117,313,920,000,000,000,000,000,000,000,000 miles (1.2×10^{29})*

The Universe is IMMENSE!

- *Estimated to Contain More Than 1 Billion Galaxies!*
 - *Each containing 100's of Billions of Stars*
- *10,000 Billion Billion
(10,000,000,000,000,000,000,000,000)
Stars that We Can See*
- *100+ Planets Orbiting Nearby Stars*

The Universe is IMMENSE!



What Makes Earth So Special?



Factors Necessary for Life

Six Factors to Be Considered

1. *Existence of Plentiful Liquid Water*
2. *Molten Core and Magnetic Field*
3. *Large Moon*
4. *Type of Star*
5. *Atmosphere*
6. *Placement within the Galaxy*

Probability

N x **fsg** x **fghz** x **fcr** x
fsp x **fchz** x **np** x **fj** x
fc x **fo** x **fm** x **fcp** x
fmn x **fw** x **ft** x **fl** x
fi x **fr** x **flc** x

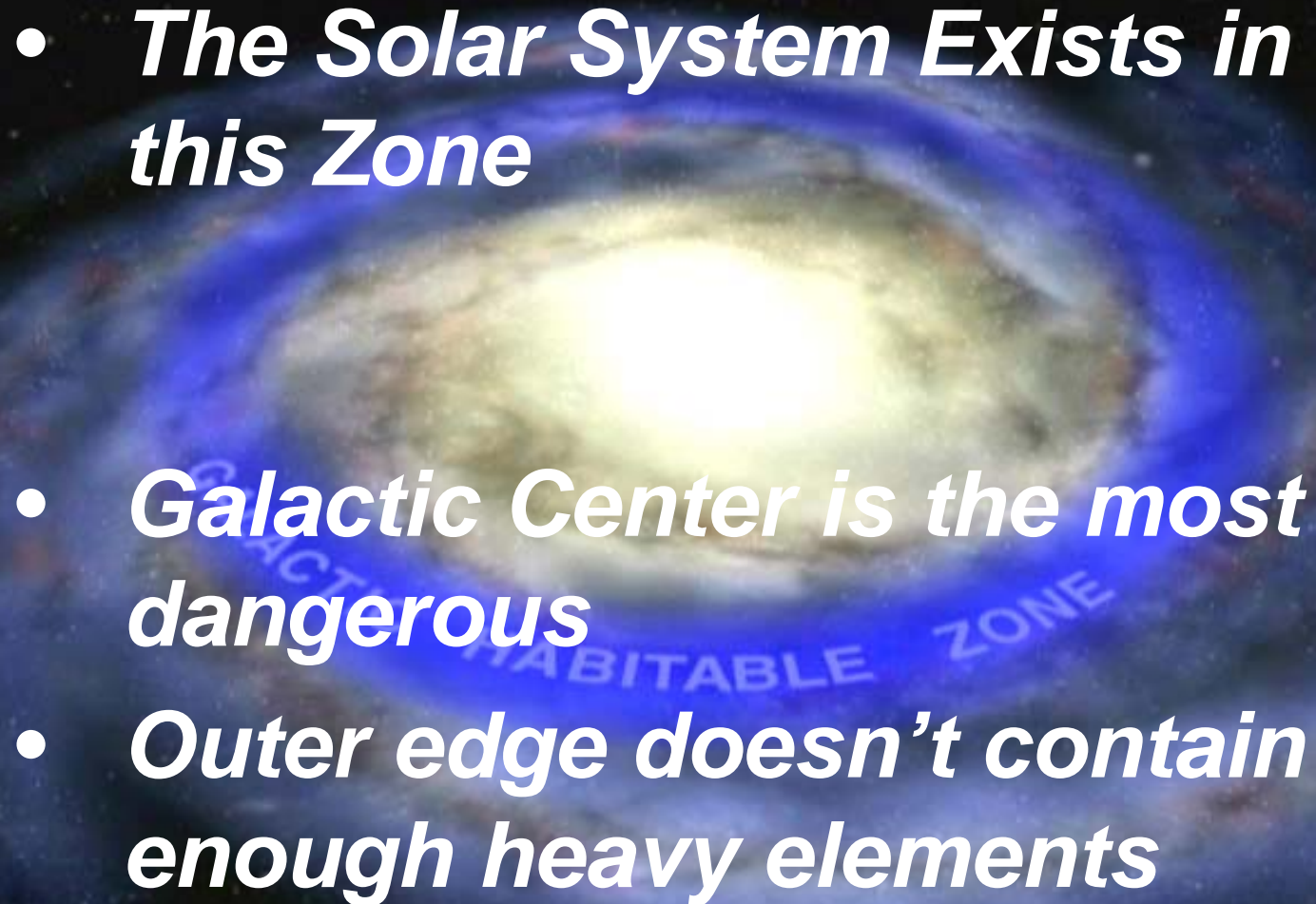
$10^{11} \times 1/10 \times 1/10 \times 1/10 \times$
 $1/10 \times 1/10 \times 1/10 \times 1/10 \times$
 $1/10 \times 1/10 \times 1/10 \times 1/10 \times$
 $1/10 \times 1/10 \times 1/10 \times 1/10 \times$
 $1/10 \times 1/10 \times 1/10 \times 1/10$

Probability

1

1,000,000,000,000,000,000

Galactic Habitable Zone

- *The Solar System Exists in this Zone*
 - *Galactic Center is the most dangerous*
 - *Outer edge doesn't contain enough heavy elements*
- 
- A spiral galaxy is shown with a bright yellow core. Two blue rings are drawn around the galaxy, representing the Galactic Habitable Zone. The text 'GALACTIC HABITABLE ZONE' is faintly visible in the background.

Conclusion

- ***Obvious design in the Universe denotes a Creator***
- ***The factors necessary for complex life to exist are “Finely Tuned” and infinitesimally complex.***
- ***It is equally amazing that the Earth is in the perfect location to allow for Scientific Discovery of the very laws that govern the Universe.***
 - ***“The most incomprehensible thing about the Universe is that it is comprehensible.”***
- Albert Einstein



The Origins of Life

Two Opposing Explanations

- ***Each has its own world view***
- ***Only one can be true – the two cannot co-exist***
- ***Explanation 1: Evolution***
- ***Explanation 2: Creation***

DNA

Basic Philosophy of Evolution

- *Everything in the Universe came into existence through random, chance processes – no supernatural involvement*
- *The origin of the Universe can be explained by time, chance and continuing processes*
- *All life originated from a single-celled organism that came from non-living matter*

Basic Philosophy of Creation

- *The Universe is NOT self-contained*
- *The Universe was created by the deliberate act of God*
- *The processes to create the Universe are not continuing today*
- *These processes are responsible for the creation of the Universe, Earth and all life*

Six Definitions of Evolution

Dr. Kent Hovind

- ***Cosmic Evolution***
- ***Chemical Evolution***
- ***Stellar and Planetary Evolution***
- ***Organic Evolution***
- ***Macro Evolution***
- ***Micro Evolution***

Only one is supported by Creation

Is Organic Evolution a "Fact"?

- *We will see that organic evolution is NOT a fact!*
- *It is based upon NON-PROVABLE ASSUMPTIONS!*

DNA

Based On Non-Provable Assumptions

- *Spontaneous generation MUST have occurred*
- *Spontaneous generation must have occurred ONLY ONCE*

DNA

Other Considerations About Origins

- ***Mutations***
- ***Homology***
- ***Genes and Chromosomes***
- ***Comparative Embryology***
- ***Irreducible Complexities***
- ***Probabilities***

DNA



Dinosaurs and Man

- **Why This Discussion?**
- **Ample Evidence of Co-Existence with Man**



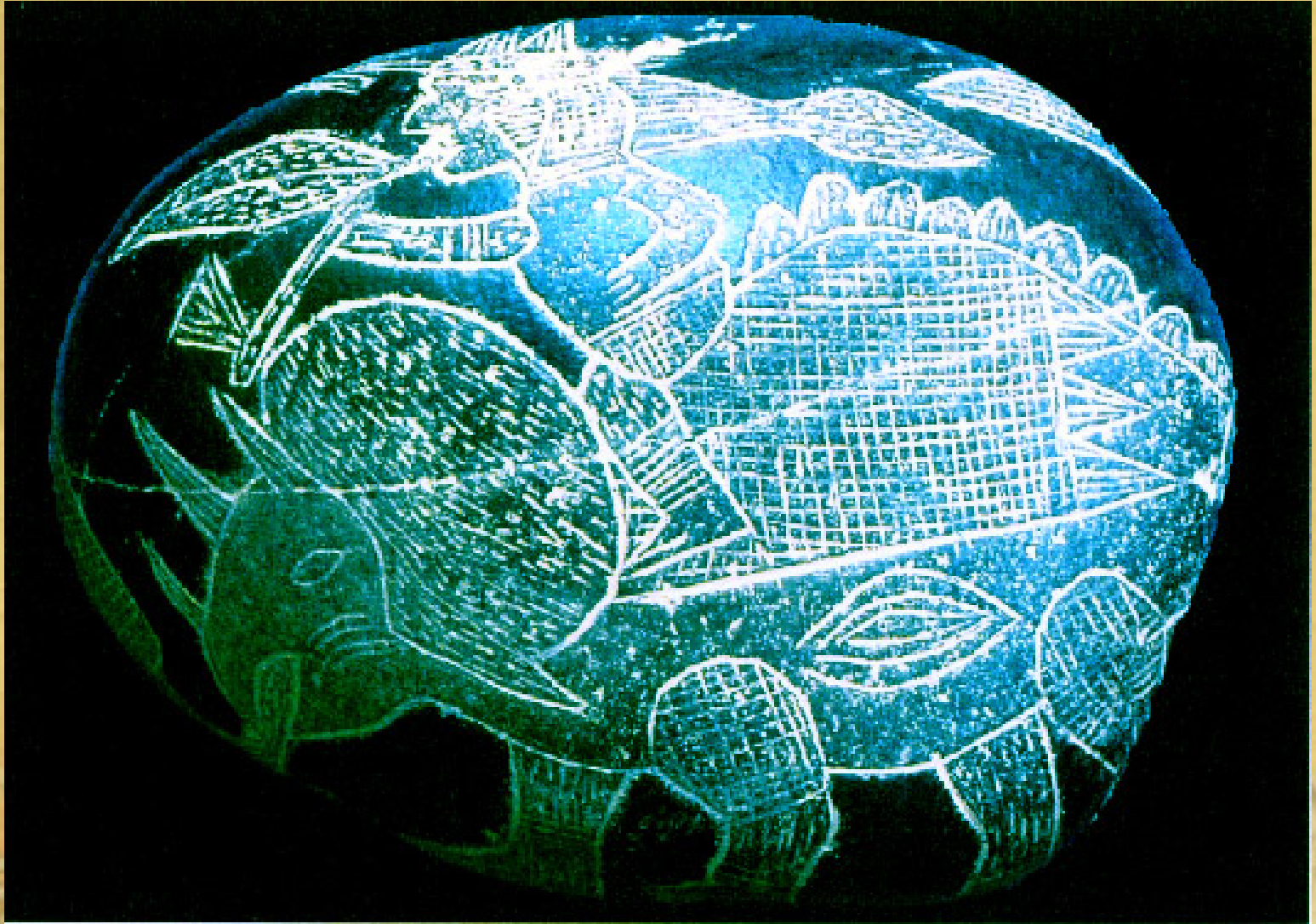
Dinosaurs and Man

Inca Burial Stones



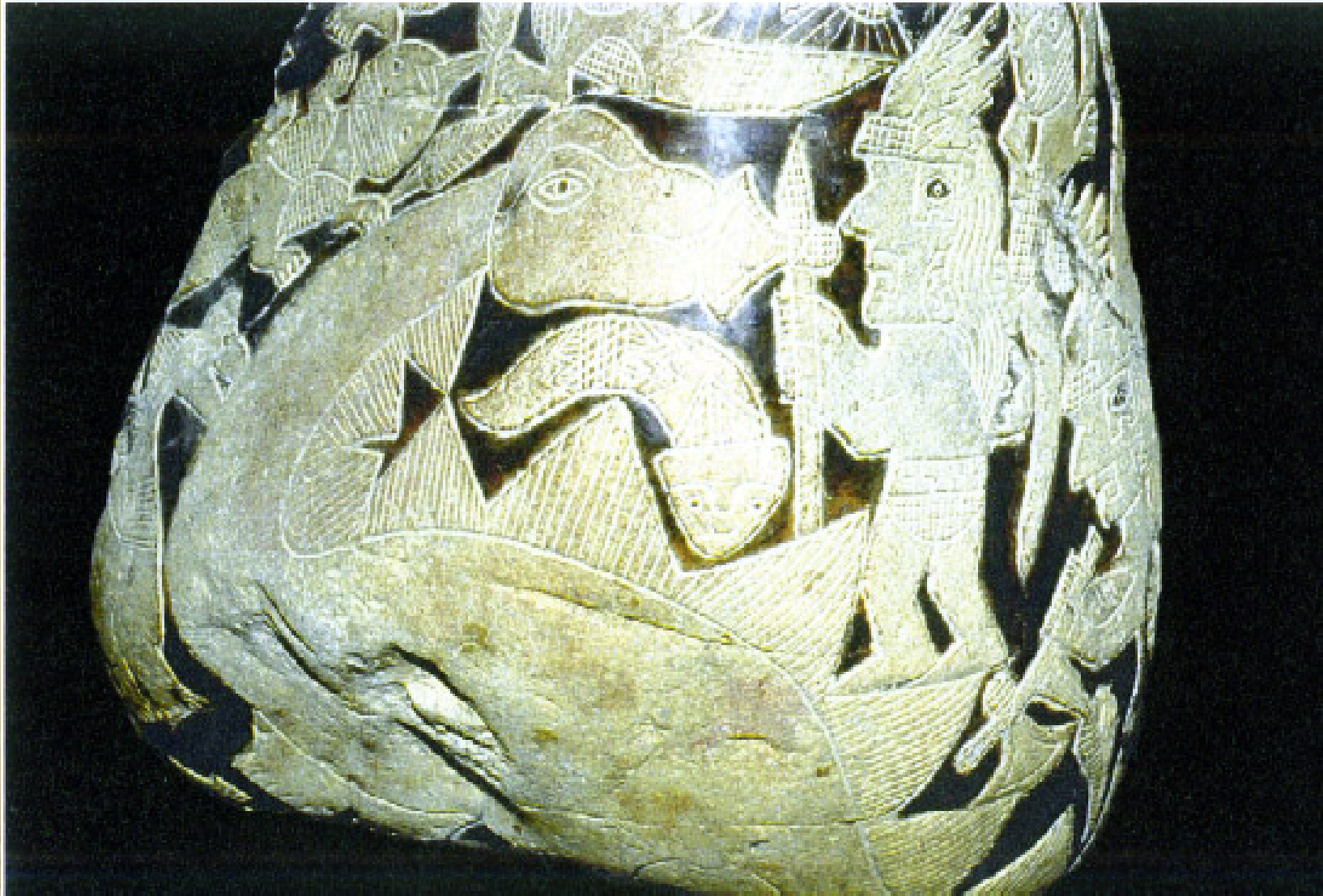
Dinosaurs and Man

Inca Burial Stones



Dinosaurs and Man

Inca Burial Stones



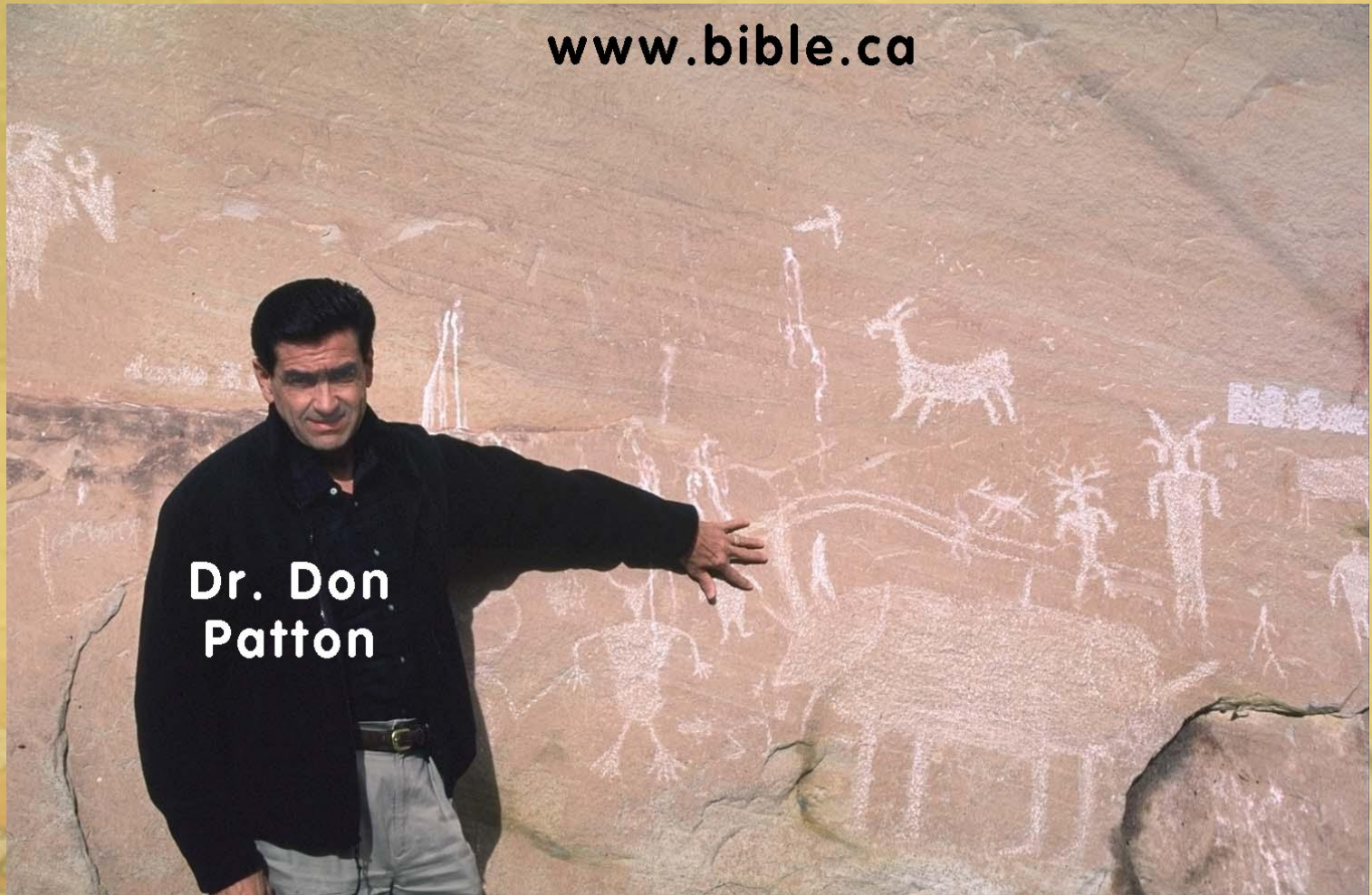


Man and Dino

www.bible.ca

Dinosaurs and Man

- **Montrose County, Colorado**
 - ***Petroglyph of a Triceratops***



Dinosaurs and Man

- Ancient Cambodian Temple



Dinosaurs and Man



Dinosaurs and Man

- More Dino Art From Peru



Dinosaurs and Man



Dinosaurs and Man



www.bible.ca

Dinosaurs and Man



Figure 7. Painting of the plesiosaur-like creature, 'Yarru', by the Kuku Yalanji tribespeople of far North Queensland, Australia.

Dinosaurs and Man

- ***The Dinosaurs of Acambaro, Mexico***
 - The artifacts were unusual in that they were highly detailed **DINOSAUR FIGURINES!**



Dinosaurs and Man



Dinosaurs and Man



www.bible.ca



www.bible.ca

Dinosaurs and Man



Dinosaurs and Man



Dinosaurs and Man



Dinosaurs and Man



www.bible.ca



www.bible.ca

Dinosaurs and Man



Dinosaurs and Man



Dinosaurs and Man



Dinosaurs and Man

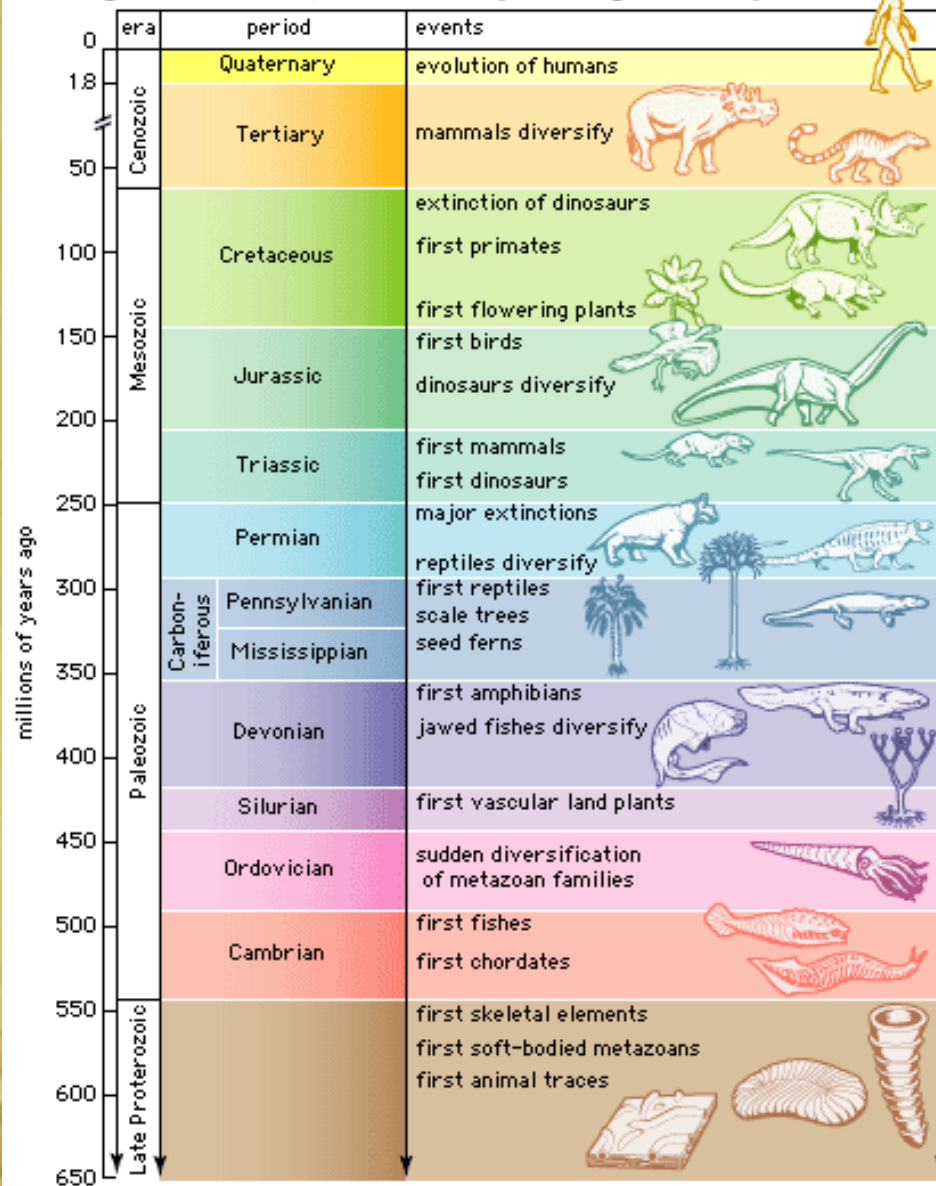


The Fossil Record

- ***An Important Element in the Creation / Evolution Debate***
- ***Defined as: the name given to the history of life on Earth as shown by fossils preserved in the rocks***
- ***Spans the Earth's History (Evolutionary Perspective)***
- ***Fossilized Remains Supposedly Begin To Appear 650 Million Years Ago***

The Fossil Record?

Geologic time scale, 650 million years ago to the present

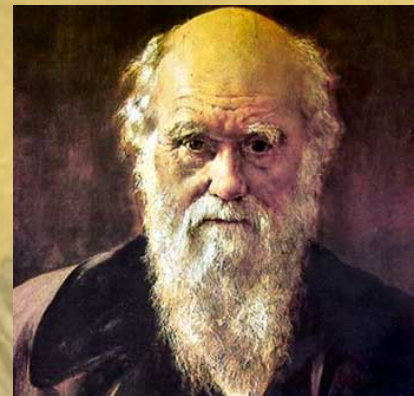


The Fossil Record

- ***Two Opposing Theories***
- ***Each Must Make Predictions***
- ***Each Prediction Must Be Compared to the Available Facts***
 - ***The Geologic Time Table***

The Fossil Record

- **Charles Darwin noted:**
 - ***“the number of intermediate varieties, which have formerly existed, must be truly enormous.”***
 - ***“Geology assuredly does not reveal any such finely graduated organic chain; and this, perhaps, is the most obvious and serious objection which can be argued against this theory”***



The Fossil Record

- ***Since Darwin's Day the Fossil Record Has Been Thoroughly Researched and Recorded***
- ***Evolutionary Geologist, T.N. George, remarked "There is no need to apologize any longer for the poverty of the fossil record. In some ways, it has become almost unmanageably rich"***
- ***The Record is Rich, But Evolutionary Evidence Remains Elusive!***

The Fossil Record

Examining The Evidence

- ***Evolutionists and Creationists Agree...***
 - ***Physical Evidence for Evolution MUST Come from the Fossil Record***
 - ***LeGros Clark, “That evolution actually did occur can only be scientifically established by the discovery of the fossilized remains...”***
 - ***In other words, the really crucial evidence for evolution must be provided by the paleontologist whose business it is to study the evidence of the fossil record”***

Cambrian Explosion

Ariel Roth (Ph.D. Zoology), *Origins*, 1998, p. 184.

“The Cambrian explosion is not just a case of all the major animal phyla appearing at about the same place in the geologic column. It is also a situation of no ancestors to suggest how they might have evolved.”

Where are the thousands of observable intermediates?

Coelacanth

- Extinct for 70 million years
- 1938 living coelacanths were found
- It is still 100% fish

The front fins (lobes) are still fins



Evolution and the Horse

Boyce Rensberger (senior editor of *Science* 80),
Houston Chronicle, Nov. 5, 1980, p. 15

“The popularly told example of horse evolution, suggesting a gradual sequence of changes from four-toed, fox-sized creatures, living nearly 50 million years ago, to today’s much larger one-toed horse, has been known to be wrong... Transitional forms are unknown.”

What Textbooks Don't Contain

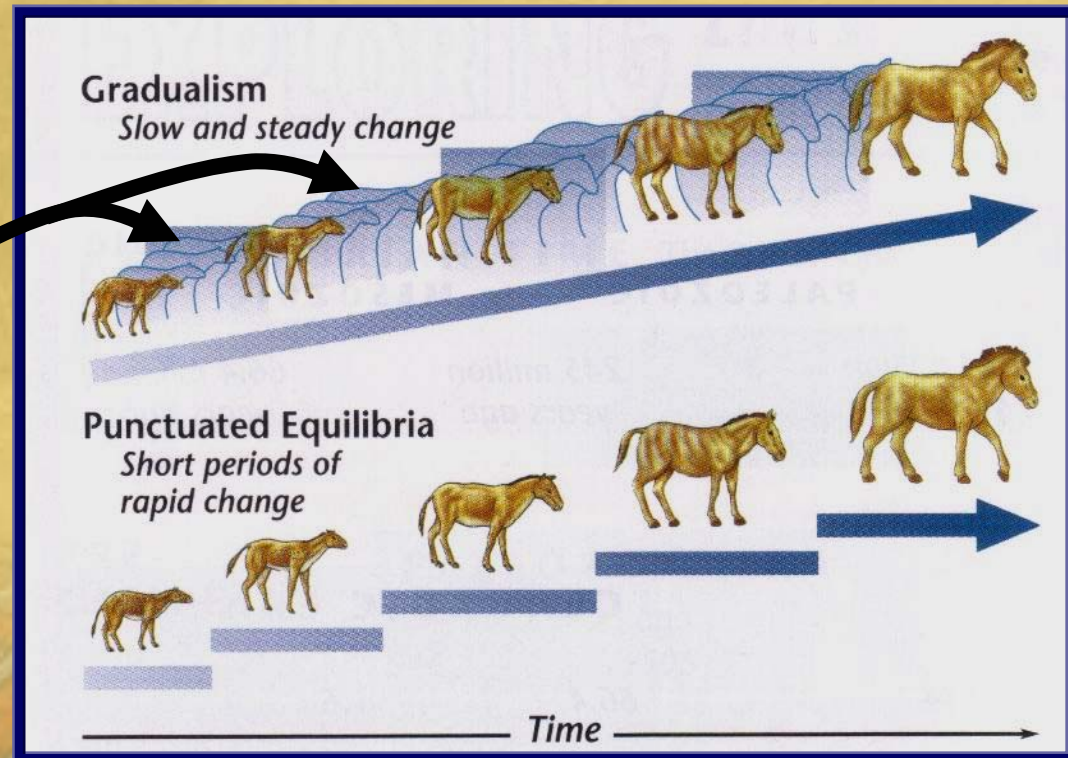
- Scientists find “fossil horses” mixed throughout all the different time layers.
- The first animal in the series, Eohippus is so different from the modern horse and so different from the next one in the series that there is a big question concerning its right to a place in the series.

What Textbooks Don't Contain

The rib count, vertebrae count, tooth count and the size of the animal, varies widely and does not show any direct line of progression (18, 15, 19, 18)

The Picture

1. Notice the line drawings
2. Similarity could be genetic variability



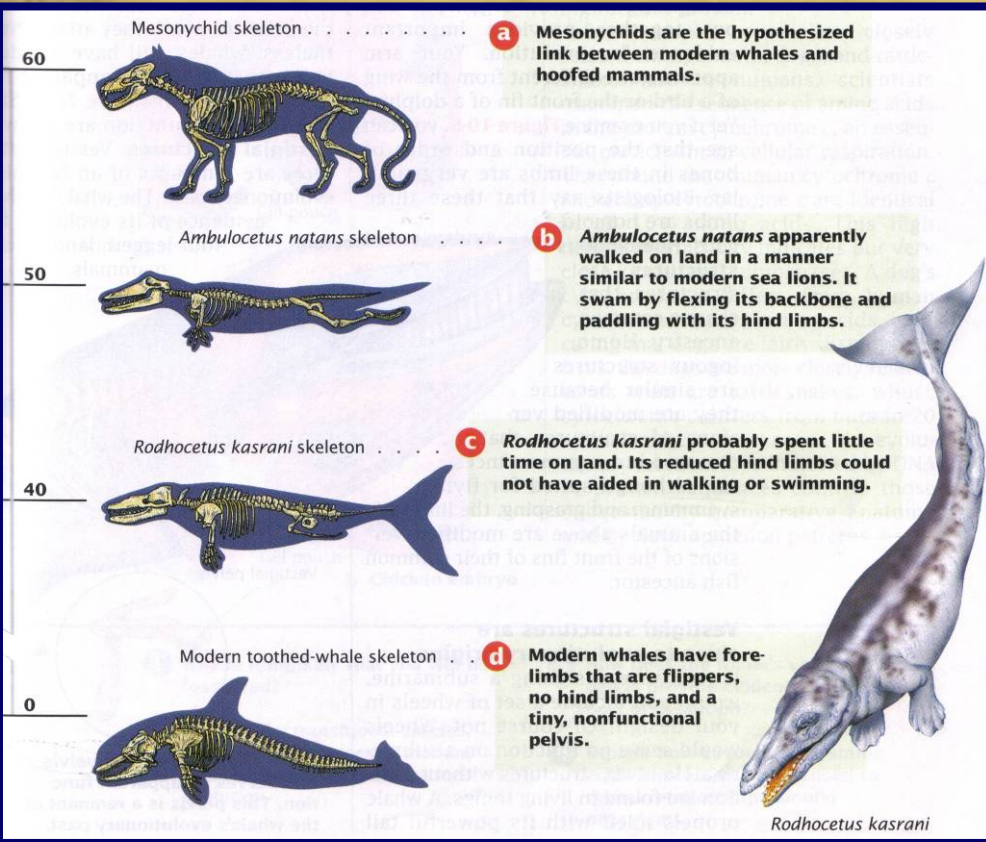
What Textbooks Don't Contain

- ◆ Many different varieties of horses exist today
- The extinct Eohippus was almost identical in body design, feet, toes and size, to the modern living Hyrax, except for the skull and tail (**a case of genetic variability**)



Whale Evolution: A Study of Deception

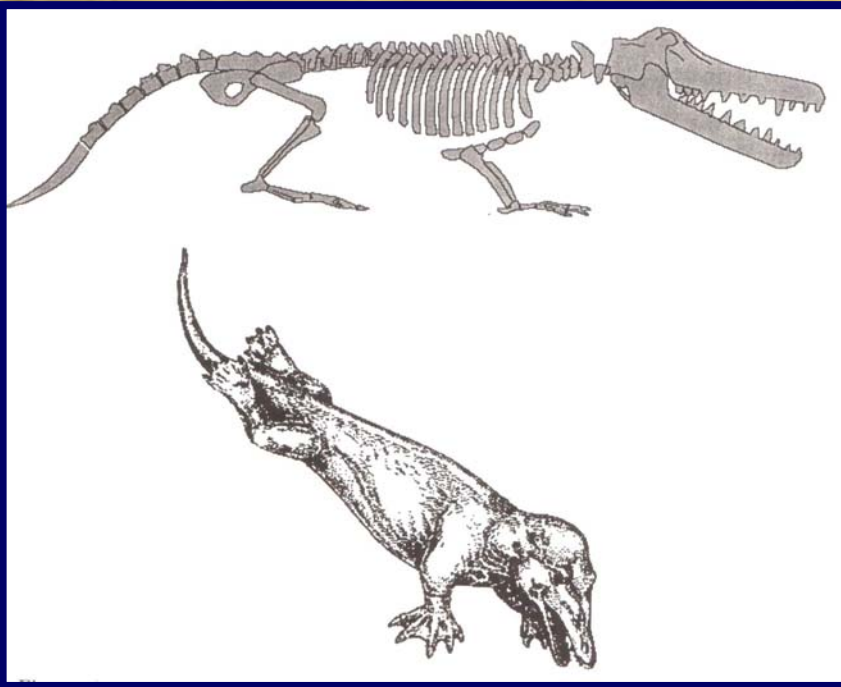
“For instance, modern whales are the descendants of four-legged land animals that are also the ancestors of horses and cows. As you can see in **Figure 10-4**, fossil intermediates between modern whales and their 60-million-year-old ancestor reveal a history of slow transformation.”



Biology: Visualizing Life, Holt, Rinehart and Winston, 1998, p. 177.

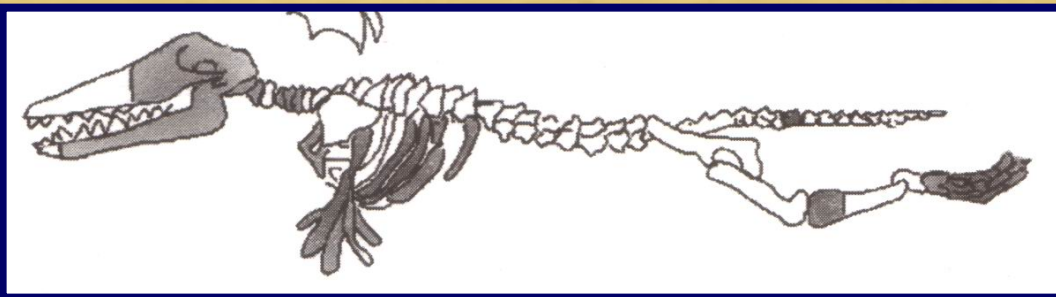
Deception

Kenneth Miller, *Finding Darwin's God*, 1999, p. 265.



Ambulocetus skeleton, as drawn in Miller's book

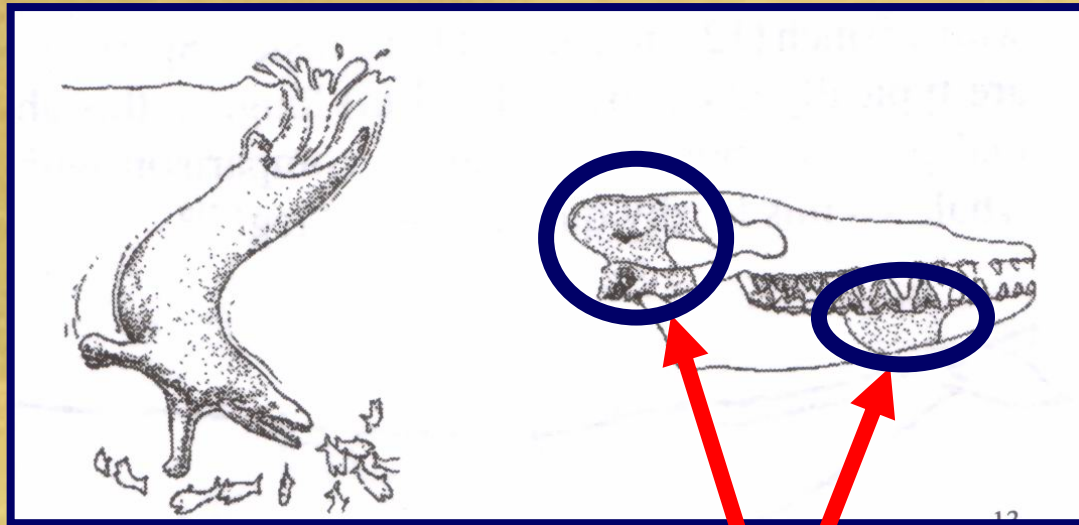
Ambulocetus reconstruction, as drawn in Miller's book



Actual bones found (shaded portion)

Deception

Pakicetus: another candidate
for whale evolution

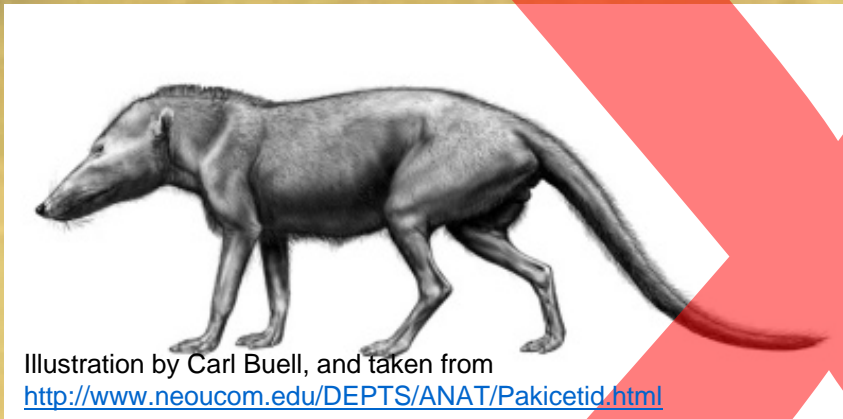


Artist
reconstruction

Only the shaded
portions of the skull
were found

Deception

Pakicetus: another candidate for whale evolution?



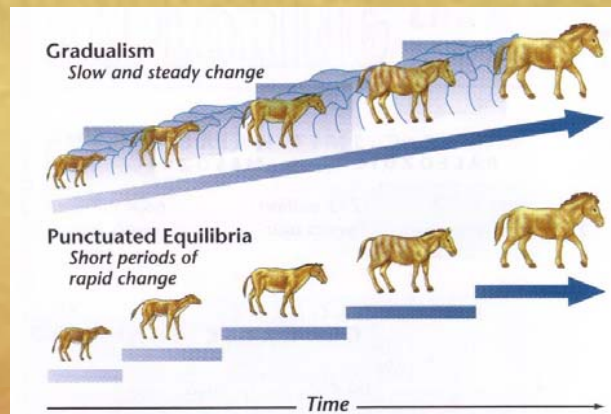
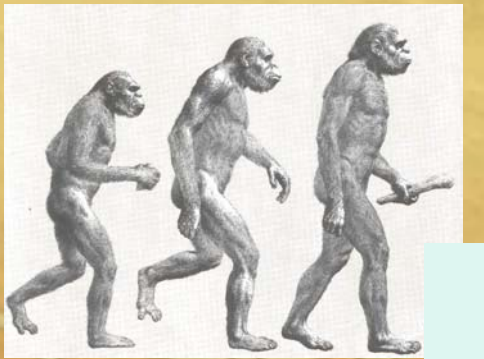
=

Intact skeletons discovered in 2001

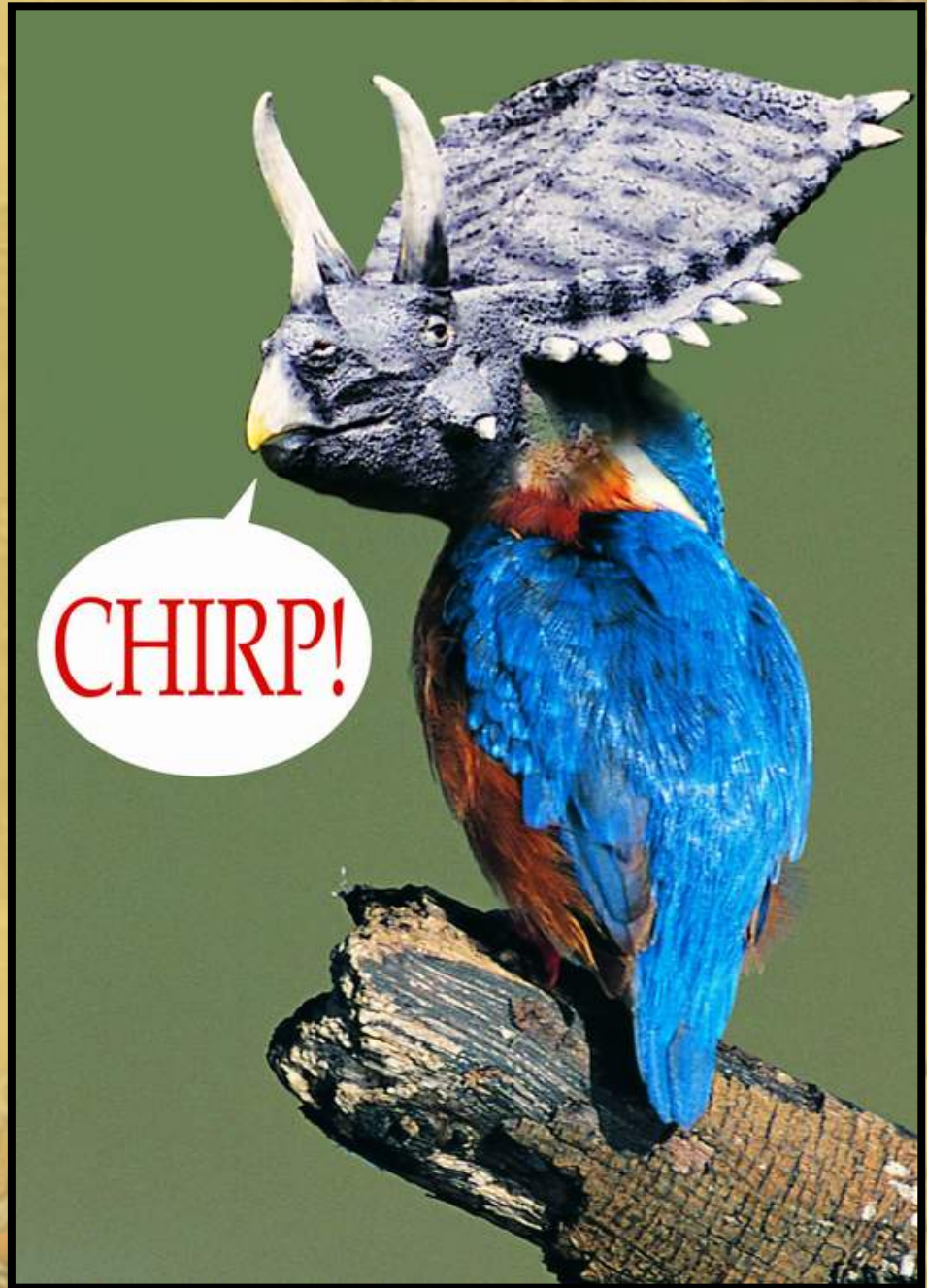
They were shown to be primarily a land animal about the size of a wolf.

Deception

Evolutionists want to believe in evolution so bad they will resort to deceiving their followers and anybody else they can control in the education system, including professors, teachers, and students by making up data that does not exist.



The Amazing Tricerakeet!



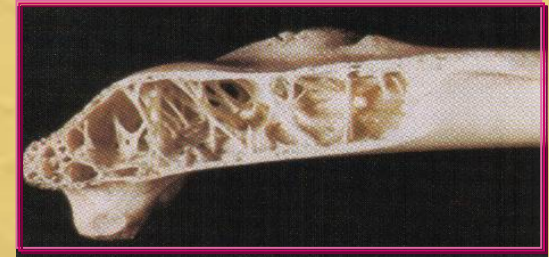
Birds Are Different From Reptiles

Stuart Burgess (Ph.D. Engineering Design, Professor of Combustion Theory, extensive study in the area of design in nature), *Hallmarks of Design*, 2002, p. 47.

“Birds are so different from other creatures that there would have been hundreds of thousands of intermediate forms between birds and land animals if birds had evolved.”

Reptile to Bird

- Development of feathers
- Reform of respiratory system
- Reform of skeletal system – hollow bones
- Reform of digestive system
- Reform of nervous system
- Construction of bills & beaks
- Mastery of nest building
- Acquisition of flight
- Development of sound producing organ



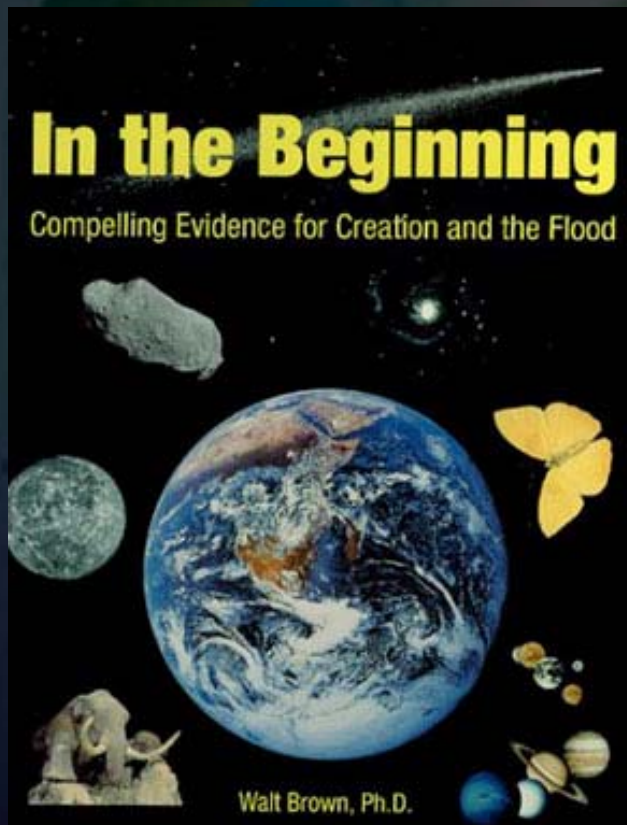
Reptile to Bird

Stuart Burgess (Ph.D. Engineering Design, Professor of Combustion Theory, extensive study in the area of design in nature), *Hallmarks of Design*, 2002, p. 47.

“It is often speculated that birds evolved from reptiles. However, there are enormous conceptual differences between the two classes of creature...”

The Hydroplate Theory

- *In the Beginning: Compelling Evidence for Creation and the Flood*



Dr. Walt Brown, Ph.D.

The Hydroplate Theory

An Overview

- *Based Upon New Evidence Indicating a World-Wide Flood In Which the Waters Came from Under the Earth's Crust*
- *The Biblical Account...*
 - *Described in Genesis 6-9*
 - *Genesis 7:11 offers an Intriguing Clue...*
 - *“In the six hundredth year of Noah's life, in the second month, on the seventeenth day of the month, on the same day all the fountains of the great deep burst open, and the floodgates of the sky were opened.”*

The Hydroplate Theory

An Overview

- ***This New Evidence Helps to Solve Many Unexplained Mysteries***

- The Grand Canyon
- Mid-Oceanic Ridge
- Continental Shelves and Slopes
- Ocean Trenches
- Earthquakes
- Magnetic Variations on the Ocean Floor
- Submarine Canyons
- Coal and Oil
- Methane Hydrates
- Ice Age
- Frozen Mammoths
- Major Mountain Ranges
- Overthrusts
- Volcanoes and Lava
- Geothermal Heat
- Strata and Layered Fossils
- Limestone
- Metamorphic Rock
- Plateaus
- Salt Domes

The Hydroplate Theory

An Overview

- ***The Flood Was Amazingly Powerful!***
 - ***Energy Released Exceeded 30 Trillion Hydrogen Bombs!***



The Hydroplate Theory

Evaluating a Theory

- *The Flood Cannot Be Repeated*
- *We Must Make Assumptions About the Pre-flood Conditions to Explain the Flood*
- *Assumptions Must Be Based Upon Accepted Scientific Laws*
- *Three Criteria Should be Used to Test Our Explanation...*

The Hydroplate Theory

Key Assumption

- *Assumptions are Required to Explain Ancient, Unrepeatable Events (Parsimony)*
- *Only One Assumption Underlies the Hydroplate Theory*
- *All Else Flows from that Assumption and the Application of the Laws of Physics*

The Hydroplate Theory

Key Assumption

- *Subterranean Water:*
 - *About half the water now in the oceans was once in interconnected chambers about 10 miles below the earth's surface. Excluding the extensive solid structure of these chambers, which will be called pillars, the subterranean water was like a thin, spherical shell, averaging about 3/4 of a mile in thickness. Above the subterranean water was a granite crust; beneath the water was a layer of basaltic rock.*

The Hydroplate Theory

- *Four Phases of the Hydroplate Theory*
 - *Rupture*
 - *Flood*
 - *Continental Drift*
 - *Recovery*

The Hydroplate Theory

Phase 1: Rupture

- *Increasing Pressure Stretched the Crust*
- *Crustal Rock Reached Failure Point and a Crack Formed and Grew at 3 Miles Per Second*
 - *Crack Penetrated Subterranean Chamber*
 - *Circled the Globe in About One Hour*
 - *Eventually Met Up with Itself and Most of the Initial Stress was Relieved*

The Hydroplate Theory

Phase 1: Rupture

- *Subterranean Pressure at Rupture Suddenly Dropped to Near Atmospheric Pressure*
 - *Causing SCW to Erupt Violently Out of the 10-Mile Deep Slit*
 - *All Along the Ridge a Fountain of Water Jetted Into and Far Above The Atmosphere*
 - *Much of the Water Fragmented and Fell as Rain Great Distances Away*

The Hydroplate Theory

Phase 2: Flood

- *Each Side of Rupture Was About 10 Miles High*
 - *Cliff Continually Breaks Up at the Bottom and is Spilled Into Jetting Fountain*
 - *Eventually the Top Half of the Cliff Also Crumbles and Falls into Fountain*
 - *46,000 Mile Rupture Widened to an Average of 800 Miles*

The Hydroplate Theory

Phase 2: Flood

- ***About 35% of the Sediment Ejected Was Basalt from the Chamber Floor***
 - ***Sediments Made the Water Thick and Muddy***
 - ***This Sediment Covered the Earth in Days, Burying Plants and Animals, Beginning the Process of Fossilization***
 - ***Liquefaction Sorted Sediments, Animals and Plants into Horizontal Layers***

The Hydroplate Theory

Phase 2: Flood

- *Rising Flood Water Eventually Blanketed the Water Jetting from the Rupture*
- *Without Major Mountains, the Earth Quickly Flooded*
 - *For Example: If the Earth were smooth like a billiard ball, there would be enough water on the earth today to flood the earth to a depth of 9,000 feet.*
 - *Today, the volume of all land above sea level is only one-tenth of the volume of water on earth.*

The Hydroplate Theory

Phase 2: Flood

- *Thinner and Higher Portions of the Crust were Supported by Subterranean Water so as the Water Escaped, Continents and Preflood Mountains Sank*
- *Therefore, the flooded earth resulted as much from sinking continents as from rising water.*

The Hydroplate Theory

Phase 3: Continental Drift

- *Material within the Earth is Compressed by Overlying Rock*
 - *Rock's Slight Elasticity Gives it Springlike Characteristics*
 - *The Deeper the Rock, the More Weight Above, the More Tightly Compressed the Spring*
- *The Rupture Path Widened, the Crust Crumbled and the Compressed Rock Beneath the Exposed Floor of the Subterranean Chamber Sprung Upward*

The Hydroplate Theory

Phase 3: Continental Drift

- *As the Mid-Atlantic Ridge Began to Rise, Adjacent Portions of the Chamber Floor Destabalized and Sprang Upward*
- *The Sliding Hydroplates were Lubricated by Still Escaping Water*
 - *Think of This Process as a Long Train Rolling Down a Slight Incline to an Eventual Chaotic Stop*
- *Continental Plates Accelerated Away from the Rising Mid-Atlantic Ridge*

The Hydroplate Theory

Phase 3: Continental Drift

- *Eventually, the Hydroplates met with Resistance of Two Types:*
 - *The First as the Lubricating Water was Depleted*
 - *The Second Occurred when the Plate Collided with Something*
- *Decelerating Plates Buckled, Crushed and Thickened*

The Hydroplate Theory

Phase 4: Recovery

- ***Where Did the Water Go?***
 - ***The Compression Event Caused the Hydroplates to Crush, Thicken, Buckle and Rise Out of the Water***
 - ***Newly Opened Basins Between Continents Became Reservoirs for the Receeding Flood Waters***